

ergo **FAK**

Portable Analysis Kit

Human Interface Hand Sensor Kit

Introduction of the Human Interface Hand Sensor Kit for use with the **ergoFAK** Portable Analysis Kit provides economical yet still powerful solutions and testing capability for hand and finger/digit testing for ergonomic, engineering, human factors and research applications.

The Human Interface Hand Sensor Kit can be used for various ergonomics applications including hand tool analysis, employee job task analysis and product design. The Hand Sensor Kit can be used by itself or in conjunction with any of the other **ergoFAK** measurement devices. For Example:

- **Pinch and insertion:** Hand sensor for pinch pressure measurement and miniature load cell to measure insertion force.
- **Pressure and Angle:** Hand sensor for pressure measurement on hand or fingers and inclinometers to measure angle of wrist or fingers.
- **Pressure and velocity:** Hand sensor for pressure measure, and accelerometer to measure speed of movement.

Features and Benefits

- Sensors provide pressure measurement for fingertip and palm/grip testing.
- Configure the sensors in any combination for your specific testing needs.
- Standard Hand Sensor Kit includes (2) fingertip sensors and (1) palm sensor.
- Additional sensors are can be added to create your "own" glove kit.
- Measure pressure for grip, single/multiple finger, and pinch.
- Sensor Thickness: 1.1 mm
- Sensitivity: 0.1 psi
- Human Interface Hand Sensor Kit can be purchased as a add-on to the ergoPAK standard kit, or as a separate standalone testing system.



ergo *PAK*

Portable Analysis Kit

For Ergonomic Industrial and Human Factors Testing

ergo *PAK* is the ergonomist's essential tool kit for collecting and analyzing field data under real job conditions. This *Portable Analysis Kit* provides the tools to measure force, angle, velocity, and pressure in virtually any combination. ergoPAK is portable, flexible and unobtrusive, all essential requirements for accurate "real world" testing applications. The highly versatile and innovative ergo *PAK* is part of our growing family of pioneering measurement products for industrial/human factors, job analysis and ergonomic applications.

ergo *PAK*

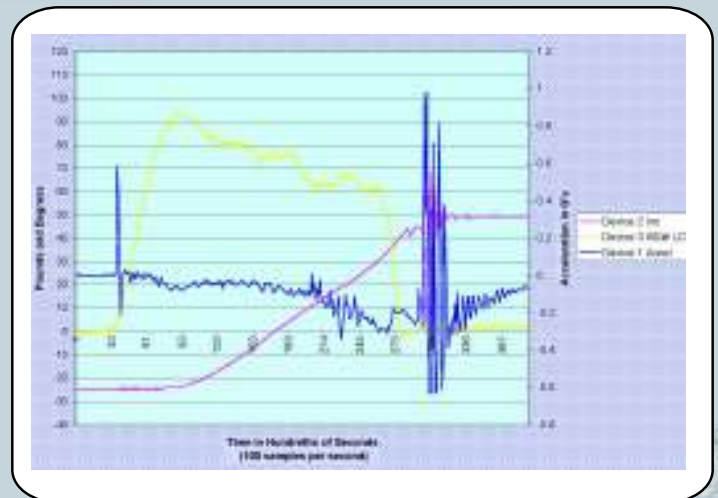
Portable Analysis Kit



- Provides the measurement tools for almost any research, industrial/human factors engineering or ergonomics testing application.
- Measure force, angle, velocity and **NOW!** pressure.
- New optional pressure glove and 3-axis gyro expand testing capabilities.
- Mix and match instrumentation sensors support virtually any measurement combination.
- Each sensor is independently calibrated for ease of upgrade or replacement.
- Eight device ports offer thousands of measurement options.
- Interface console can be linked to expand measurement capacity.
- Wireless interface supports remote data capture.
- Portable, flexible and unobtrusive, for field data capture without job interference.
- Interface console downloads test data to desktop, laptop or tablet PC.

ergo *PAK* Software

- Automatically identifies which device(s) (force, angle, velocity, and pressure) are being used.
- Collect test data with one gauge, or simultaneously with any combination of gauges.
- Saved data is output into a text file, that can be downloaded into any spreadsheet or data analysis software.



ergo **PAK**

Portable Analysis Kit

HOGGAN ergo products are manufactured to the highest standards of accuracy, reliability, and durability.

ergo **PAK** Specifications

- Wireless (radio frequency) allows free motion and data capture within 100 feet.
- Instrumentation Devices (standard package):
 - o (1) digitFET miniature 50 lb. capacity load cell for small force compression with hand, fingers/thumb, and pinch test applications. Records in .1 lb. increments
 - o (1) ergoFET 500 lb. capacity load cell for medium to heavy compression and tension (push and pull) test applications. Records in .1 lb. increments.
 - o (2) Small inclinometers can be used together or independently for angle measurement or range of motion testing. Measures 360 degrees in 1 degree increments.
 - o (2) Accelerometers can be used together or independently for acceleration (G's) measurement testing. Measures in 0.01G increments
 - o New optional pressure glove and 3-axis gyro now available
 - o Additional devices (force, angle, velocity, and pressure) available in any combination.
- Optional human factors and engineering test attachment accessory kits available.
- 1 Year Warranty – Parts and Labor and 1st year annual calibration included (Extended Warranty Available).



3-axis gyro



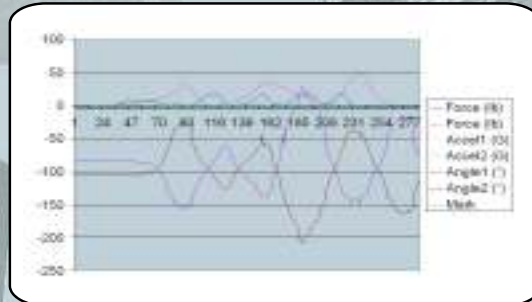
pressure glove



ergo **PAK**

Product Includes:

- Universal interface "plug and play" console.
- Wireless receiver connects to computer
- (1) digitFET 50# load cell with test attachments.
- (1) ergoFET 500# load cell with test attachments.
- (2) inclinometers
- (2) accelerometers
- ergoPAK data acquisition software.
- User Manual.
- Carrying case.
- Warranty card.
- Calibration certificate



Software Specifications/ Minimum System Requirements

- Windows XP or 2000
- Pentium 300 MHz or higher
- 800x600 display with at least 256 colors
- 32 MB RAM
- 1 available serial or USB communication port
- CD/CR-RW drive for software installation
- 50 MB free hard disk space
- 16-bit sound card with speakers
- Printer-color recommended